

SI ELLEN FARMS

GPS Address

17210 NE 83rd Street, Vancouver, WA 98682

Model Home

The Deschutes | 1,814 SF | 3 bed | 2 bath

Sales Contact

Vicki | (360) 600-9201

vickit@buildplh.com

QUICK MOVE-IN

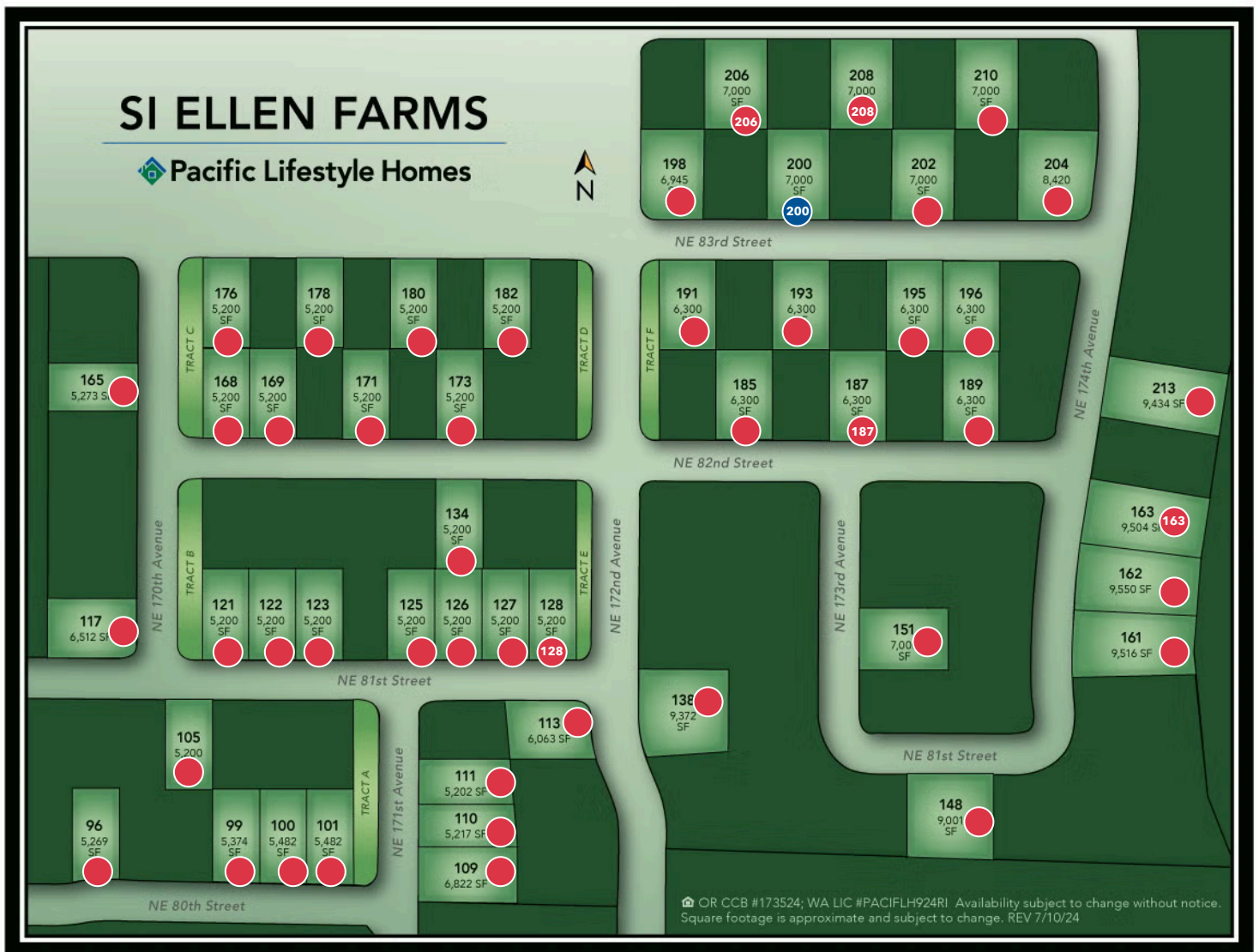
SITE	HOME PLAN	SQ FT	BED/BATH	GARAGES	ADDRESS	PRICE
200	The Laurelwood	2,258	3 / 2	3-car	17210 NE 83rd St	\$849,000

SI ELLEN FARMS

GPS Address

17210 NE 83rd Street, Vancouver, WA 98682

SI ELLEN FARMS – SITE MAP



 Quick Move-In  Sold

Square footage is approximate and subject to change. Completion dates are subject to change. Pre-Sale pricing is the base price. Permit Ready pricing includes structural options. Quick Move-In pricing includes structural and personal choice options. Pricing is subject to change. Pacific Lifestyle Homes, Broker. WA LIC# PACIFLH924RI; OR CCB# 173524.