

Contact Us

Phone: (877) 500-5675

Email: info@buildplh.com

Homesite 5 NE 21st Street

Vancouver, WA 98684

Priced At

\$779,000

Schnell Farms

The Bridger Floor Plan

- 3,181
Square Feet
- 4-5
Bedrooms
- 3 - 4
Bathrooms
- 3
Tandem Garage



The Bridger is a highly adaptable and spacious two-story home offering up to 3,238 square feet of beautifully designed living space, with 4 to 5 bedrooms, 3 to 4 bathrooms, and a 3-car tandem garage with the option for a fourth bay. Thoughtfully crafted to balance open-concept living with flexibility, the Bridger is perfect for growing families, multi-generational households, or those who love to entertain.

Upon entry, you're welcomed by a den—a perfect home office, study, or flex space. Also located on the main floor is a bedroom and full bathroom, ideal for guests or extended family. Just past this area, a convenient mud room with built-in storage connects directly to the spacious tandem garage. A nearby hall includes additional cabinetry for storage and the staircase to the second floor.

At the heart of the home, the dining area flows into the gourmet kitchen, which features a large center island and an oversized walk-in pantry that also connects directly to the mud room for everyday convenience. Opposite the kitchen is the expansive two-story great room, filled with natural light from oversized windows and a double sliding glass door in the dining area that opens to the covered patio—perfect for indoor-outdoor living.

Upstairs, you'll find a generous loft that can be converted into a fifth bedroom with an added full bathroom. If the fifth bedroom option is selected, a new loft space can be added above the great room to maintain that flexible living space. The primary suite is a true retreat, featuring a private sitting room—perfect for a home gym, reading nook, or cozy lounge. The luxurious primary bath includes a walk-in shower, soaking tub, dual vanities, and a spacious walk-in closet with a convenient door leading directly to the laundry room. Two additional secondary bedrooms, a full bathroom, and the laundry room round out the upper level.

For those needing more privacy or independent living arrangements, the Bridger offers an optional multi-generational suite that transforms the main floor den, bedroom, and bathroom into a fully functional multi-gen living space. This private suite increases the home's total size to 3,238 square feet and includes its own private entrance from the porch, leading into a sitting room with a kitchenette. The bedroom includes space for an optional stacked washer and dryer, and the suite also has its own full bathroom. The addition of this suite also introduces a new powder room in the main living area for added convenience.

With its expansive layout, high ceilings, optional customizations, and thoughtful multi-gen configuration, the Bridger is the perfect home for those seeking space, flexibility, and long-term comfort—all within a modern, beautifully designed two-story plan.

Square footage is approximate and subject to change. Completion dates are subject to change. Pre-Sale pricing is the base price. Permit Ready pricing includes structural options. Quick Move-In pricing includes structural and personal choice options. Pricing is subject to change. Pacific Lifestyle Homes, Broker. WA LIC# PACIFLH924RI; OR CCB# 173524.



Contact Us

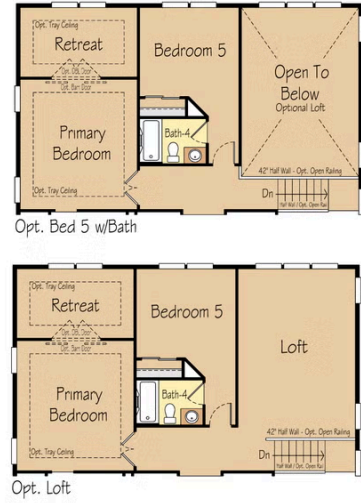
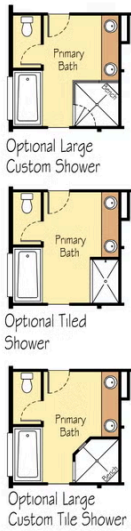
Phone: (877) 500-5675
Email: info@buildplh.com

Homesite 5 NE 21st Street

Vancouver, WA 98684

The Bridger Floor Plan

3181 Bridger



Square footage is approximate and subject to change. Completion dates are subject to change. Pre-Sale pricing is the base price. Permit Ready pricing includes structural options. Quick Move-In pricing includes structural and personal choice options. Pricing is subject to change. Pacific Lifestyle Homes, Broker. WA LIC# PACIFLH924RI; OR CCB# 173524.