

Contact Us

Phone: (877) 500-5675
Email: info@buildplh.com

4211 N 11th Way

Ridgefield, WA 98642

Priced At

\$989,000

Paradise Pointe

The Aspen Floor Plan

- 3097

Square Feet

- 4

Bedrooms

- 3.5

Bathrooms

- 3

Car Garage



The Aspen floor plan makes the most of its many options to provide you with flexibility and comfort. This 3097-square-foot home has three to four bedrooms, two to 3.5 bathrooms, a three-car garage, and numerous ways in which you can maximize the floor plan to meet your personal needs.

The Aspen is a two-story home, with the emphasis on the first floor. A growing number of homeowners are looking for ground-floor living, including primarys-on-the-main for comfort and convenience. In the Aspen, you get the benefits of a rambler, with the added bonus of additional bedrooms and living area upstairs, ideal for older children, multi-generational households, a home office, or room to dedicate to personal hobbies and interests. Throughout the home, there's a perfect blend of open plan and partial walls to define the areas, while keeping the home feeling spacious and open.

From the moment you first approach the Aspen -- with beautiful variations for the exterior using siding and stonework -- you'll love what you see. A covered front porch welcomes you to the home and the elegant front door features a transom window and side window for added beauty. You enter into the foyer that features a coffered ceiling for a great first impression. Just off the entry, there's a living room with arched entrance that can also be converted into a den area with additional wall and door options.

From the entry, you can walk straight into the heart of the home, passing the dining area which features arched windows created from partial walls for more definition of the space. There is also a tray ceiling included in the dining room. As you pass the dining room, you end up in the great room that opens onto the spacious kitchen with an additional nook for more casual dining or even a homework station or play area for younger children. There's an optional extension to this nook for additional room. The large kitchen includes plenty of counter and cabinet space, along with an island and a walk-in pantry.

Off the other side of the great room is another arched entrance that leads into a hallway area that has a door leading from the garage, along with a bench and optional cabinets to help the area serve as a mud room. There is also access to the large laundry room with optional cabinets and sink. This hallway area also ultimately leads to the primary bedroom suite. The bedroom, with double doors leading into the room, also has double doors leading to the spa-like bathroom. The bathroom features a separate bathtub and shower, with options for the shower design. There is also a dual-sink vanity, separate toilet room, and a large walk-in-closet.

From the entry, if you turn to the side and go past the living room/den, you'll come to a hallway with a linen closet, access to the second bedroom, a full bathroom, and stairs that lead up to the second floor. This additional level offers a variety of layout options such as a third bedroom with large walk-in-closet, loft area, and bonus room, or potentially a third and fourth bedroom with a full bathroom and a loft area. This floor is filled with opportunities to customize the layout to meet your needs.

With the Aspen, you have a plethora of choices to help you customize and personalize the home. Among the many options are:

- Tray Ceiling in the Primary Bedroom
- Additional Windows in the Primary Bedroom
- Powder Room Across from the Laundry
- Gas Fireplace in the Great Room
- Built-Ins Adjacent to the Fireplace
- Skylights in the Kitchen and Primary Bathroom
- Storage Areas Upstairs

When you choose the Aspen from Pacific Lifestyle Homes, you get a quality-built home with the options and flexibility you need to ensure you'll love your home for years to come. Square footage is approximate and subject to change. Completion dates are subject to change. Pre-sale price is the base price of home. Permit Ready includes structural options. Pricing is subject to change. The Quick Move In price includes Structural and Personal choice options. Pacific Lifestyle Homes, Broker. WA LIC# PACIFLH924RI; OR CCB# 173524.



Contact Us

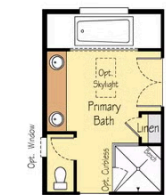
Phone: (877) 500-5675
Email: info@buildplh.com

4211 N 11th Way

Ridgefield, WA 98642

The Aspen Floor Plan

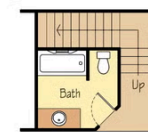
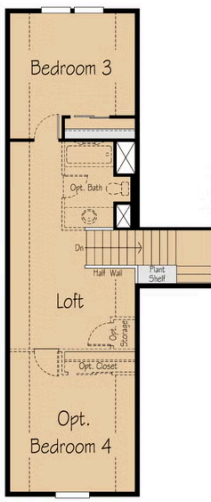
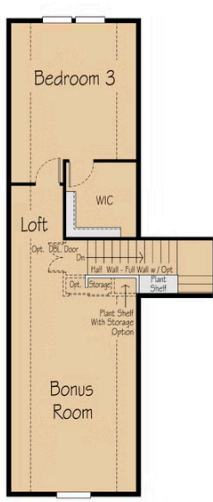
3097 Aspen



Optional Large Custom Glass Mud-Set Shower



Optional Large Custom Mud-Set Shower



Optional Hall Bath



Optional Powder



Multi Gen Option

Square footage is approximate and subject to change. Completion dates are subject to change. Pre-sale price is the base price of home. Permit Ready includes structural options. Pricing is subject to change. The Quick Move In price includes Structural and Personal choice options. Pacific Lifestyle Homes, Broker. WA LIC# PACIFLH924RI; OR CCB# 173524.