

Contact Us

Phone: (877) 500-5675  
Email: info@buildplh.com

## 2105 96th Ave Ct E

Edgewood, WA 98371

### **Priced At**

\$929,900

Northwood West

The Sage Floor Plan

- 2353  
Square Feet
- 4  
Bedrooms
- 2.5  
Bathrooms
- 2  
Car Garage



The Sage home plan offers 2,353 square feet of beautifully designed living space with 4 to 5 bedrooms and 2.5 to 3 bathrooms. With the primary suite on the main floor, this layout provides the perfect balance of convenience and comfort while still offering plenty of room for family and guests.

Upon entry, you are welcomed by a spacious foyer with a drop zone for coats and shoes. Just off the entry is a guest bedroom, ideal for visitors or multi-generational living. A little farther into the home, a powder room can be found, which also has the option to be upgraded into a full bathroom. A large laundry room nearby adds to the functionality and flow of the main floor.

The heart of the home is the great room, featuring 11-foot ceilings and expansive windows that fill the space with natural light. The great room opens seamlessly to the chef's kitchen, which includes a large island (with an option to extend), abundant counter space, and a spacious walk-in pantry. From the kitchen, the dining nook provides access to the covered outdoor living area, perfect for indoor-outdoor entertaining year-round.

Just beyond the kitchen lies the primary suite, thoughtfully designed for privacy and relaxation. The suite features a spacious bedroom and a luxurious bath, which can be personalized with a variety of shower options, from enclosed tile walls to an elegant glass shower. A large walk-in closet completes the retreat.

Upstairs, the Sage includes two secondary bedrooms, a full bathroom, and a large loft that can also be converted into a fifth bedroom, depending on your needs. The home comes standard with a 2-car garage, with options to expand into multiple 3-car garage configurations depending on the homesite.

The Sage is a flexible and modern design that adapts to your lifestyle, offering open living spaces, private retreats, and plenty of options to personalize your home. Square footage is approximate and subject to change. Completion dates are subject to change. Pre-Sale pricing is the base price. Permit Ready pricing includes structural options. Quick Move-In pricing includes structural and personal choice options. Pricing is subject to change. Pacific Lifestyle Homes, Broker. WA LIC# PACIFLH924RI; OR CCB# 173524.



Contact Us

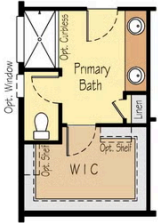
Phone: (877) 500-5675  
Email: [info@buildplh.com](mailto:info@buildplh.com)

**2105 96th Ave Ct E**

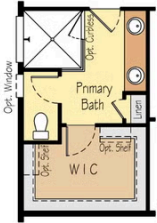
Edgewood, WA 98371

The Sage Floor Plan

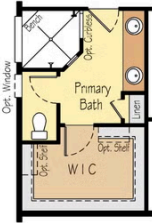
# 2353 Sage



Optional Full Tiled Shower



Optional Large Custom Glass Shower



Optional Large Custom Tiled Shower



Optional Full Bath 3  
(In Lieu Of Powder)



Optional Bedroom 5



Optional 5x20' Shop

Optional 10x20' 3rd Garage

Optional 10x30' 3rd Garage

Square footage is approximate and subject to change. Completion dates are subject to change. Pre-Sale pricing is the base price. Permit Ready pricing includes structural options. Quick Move-In pricing includes structural and personal choice options. Pricing is subject to change. Pacific Lifestyle Homes, Broker. WA LIC# PACIFLH924RI; OR CCB# 173524.