

Contact Us

Phone: (877) 500-5675
Email: info@buildplh.com

8322 N Hargrave St

Camas, WA 98607

Priced At

\$727,000

The Landing at Green Mountain

The Deschutes Floor Plan

- 1814
Square Feet
- 3
Bedrooms
- 2.0
Bathrooms
- 2
Car Garage



The Deschutes lives up to its name, offering a sense of airy space, while still being a manageable size. This single-level home is ideal for smaller families or empty nesters. This three bedroom, two bathroom, two-car garage home has 1814 square-footage and multiple exterior elevations, ranging from traditional Craftsman style to a more modern interpretations. With each, you get a welcoming covered front porch, a large, beautiful window, and elegant combinations of siding, shingles, and stonework to create a home that is beautiful, comfortable, and designed to meet your needs.

From the covered front porch, you enter a defined entry, which then leads from a coffered ceiling hallway that takes you into the great room. Off this hallway on one side is a door leading to the garage for easy access, and on the other, a passage that leads to a full bathroom with linen closet, and two bedrooms that share the bathroom. The hallway also features a coat closet and access to the spacious laundry room, which includes another linen closet for additional storage and convenience.

The coffered-ceiling hallway ultimately flows into the great room through an arched entrance. The great room is part of the open-plan living design that includes the spacious kitchen and dining area. This layout creates a sense of openness that allows family and guests to interact easily and mingle, while still having a sense of separate sections. The coffered ceiling over the great room defines the living area, and the angled kitchen island helps define the kitchen area, which includes a large walk-in pantry. The dining area has an optional extension to further define it and provide additional space.

On the other side of the great room is an entry nook that leads off to the primary bedroom and bathroom, providing additional privacy. The primary bedroom has an optional tray ceiling and an outstanding connected bathroom with dual-sink vanity and bathtub, spacious linen closet for your towels and toiletries, a separate toilet room, and a gigantic walk-in closet. The primary bathroom also has a several options to personalize the shower to what you want!

The Deschutes is a beautifully contained home design that makes the most of its space, offering privacy for the bedrooms, while using the layout of the great room, kitchen, and dining room to serve as the heart of the home for family to come together. Plus, as with all Pacific Lifestyle Homes, there are a number of options available to make the Deschutes a home that meets your needs, while also making it more appealing to your lifestyle. Among these options are:

- Double Oven in Kitchen
- Optional Sink and Cabinet in Laundry Room
- Additional Window in the Primary Bedroom
- Gas Fireplace in the Great Room
- Built-Ins Adjacent to the Fireplace
- Three-car Garage with Exterior Door
- Skylight in Kitchen and Primary Bathroom

The Deschutes is a home that will meet the needs of a variety of homeowners. With the numerous structural and personal design choices, there is space to play and plenty of room to get away from it all when the mood strikes. Throughout the design, you'll find comfort, convenience, and a place to call home. Square footage is approximate and subject to change. Completion dates are subject to change. Pre-Sale pricing is the base price. Permit Ready pricing includes structural options. Quick Move-In pricing includes structural and personal choice options. Pricing is subject to change. Pacific Lifestyle Homes, Broker. WA LIC# PACIFLH924RI; OR CCB# 173524.

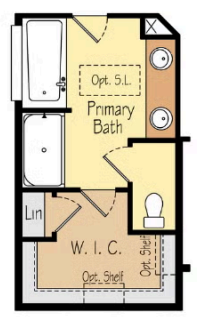
Pacific Lifestyle Homes

Contact Us
 Phone: (877) 500-5675
 Email: info@buildplh.com

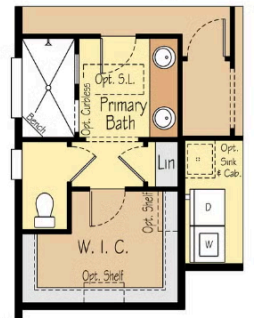
8322 N Hargrave St

Camas, WA 98607

The Deschutes Floor Plan



Soaking Tub Option



Mud-Set Shower Option



Square footage is approximate and subject to change. Completion dates are subject to change. Pre-Sale pricing is the base price. Permit Ready pricing includes structural options. Quick Move-In pricing includes structural and personal choice options. Pricing is subject to change. Pacific Lifestyle Homes, Broker. WA LIC# PACIFLH924RI; OR CCB# 173524.