

Quick Move-in Homes



AVAILABLE DEC 2025

1103 S Mountain Pl

Ridgefield, WA

at [The Reserve at Seven Wells](#)

Lot #42 | The Sequoia

\$899,000

3 BR | 2 BA | 2,596 SF



AVAILABLE NOW

1137 W Malbar St

Meridian, ID

at [Sagarra at Orchard Park](#)

Lot #13/1 | The Rogue

\$799,900

5 BR | 3 BA | 2,784 SF



AVAILABLE NOW

1143 N 41st Pl

Ridgefield, WA

at [Paradise Pointe](#)

Lot #82 | The Deschutes

\$859,000

3 BR | 2 BA | 1,814 SF



AVAILABLE NOW

1155 W Malbar St

Meridian, ID

at [Sagarra at Orchard Park](#)

Lot #12/1 | The Tamarack

\$699,900

3 BR | 2 BA | 2,040 SF



AVAILABLE NOW

1173 W Malbar St

Meridian, ID

at [Sagarra at Orchard Park](#)

Lot #11/1 | The Evergreen

\$824,900

4 BR | 3 BA | 2,802 SF



AVAILABLE NOW

1205 S Mountain Pl

Ridgefield, WA

at [The Reserve at Seven Wells](#)

Lot #46 | The Willow

\$899,000

3 BR | 2.5 BA | 2,893 SF

Quick Move-in Homes

**AVAILABLE DEC 2025****1211 S Mountain Pl**

Ridgefield, WA

at [The Reserve at Seven Wells](#)

Lot #47 | The Rogue

\$899,000

4 BR | 3 BA | 2,527 SF

**AVAILABLE NOW****12300 SW Silvertip St**

Beaverton, OR

at [Scholls Heights](#)

Lot #20 | The Alder

\$739,000

3 BR | 2.5 BA | 2,603 SF

**AVAILABLE NOW****1319 W Malbar St**

Meridian, ID

at [Sagarra at Orchard Park](#)

Lot #3/1 | The Eldridge

\$749,900

4 BR | 3 BA | 2,601 SF

**AVAILABLE NOW****1343 W Malbar St**

Meridian, ID

at [Sagarra at Orchard Park](#)

Lot #2/1 | The Nisqually

\$699,900

3 BR | 2.5 BA | 2,272 SF

**AVAILABLE NOW****15437 SW Everglade Ave**

Tigard, OR

at [River Terrace Crossing](#)

Lot #183 | The Pinehurst

\$699,000

4 BR | 2.5 BA | 1,991 SF

**AVAILABLE NOW****15650 SW Missouri Road**

Tigard, OR

at [River Terrace Crossing](#)

Lot #127 | The Wenatchee

\$779,000

4 BR | 3.5 BA | 2,358 SF

Quick Move-in Homes

**AVAILABLE NOW****15689 SW Missouri Ave**
Tigard, ORat [River Terrace Crossing](#)

Lot #159 | The Madison

\$769,000

5 BR | 3.5 BA | 3,182 SF

**AVAILABLE NOW****15720 Godon Way**
Oregon City, ORat [Serres Farms](#)

Lot #2 | The Deschutes

\$699,000

3 BR | 2 BA | 1,814 SF

**AVAILABLE NOW****16106 Barlow Trail Ln**
Oregon City, ORat [Serres Farms](#)

Lot #27 | The Rogue

\$816,000

4 BR | 3 BA | 2,527 SF

**AVAILABLE NOW****16108 Serres Farms Road**
Oregon City, ORat [Serres Farms](#)

Lot #49 | The Willow

\$959,000

4 BR | 2.5 BA | 2,893 SF

**AVAILABLE NOW****16704 NE 38th Ave**
Vancouver, WAat [Salmon Creek Ridge](#)

Lot #13 | The Willow

\$899,000

3 BR | 2.5 BA | 2,893 SF

**COMING SOON****17300 NE 82nd St**
Vancouver, WAat [Si Ellen Farms](#)

Lot #187 | The Laurelwood

\$823,000

3 BR | 2.5 BA | 2,258 SF

Quick Move-in Homes

**AVAILABLE NOW****17301 NE 84th St**

Vancouver, WA

at [Si Ellen Farms](#)

Lot #208 | The Conifer

\$865,000

3 BR | 2 BA | 1,982 SF

**AVAILABLE DEC 2025****17311 NE 83rd Steet**

Vancouver, WA

at [Si Ellen Farms](#)

Lot #196 | The Chinook Multi-Gen

\$889,000

5 BR | 3.5 BA | 2,970 SF

**AVAILABLE NOW****3615 NE 169th Way**

Vancouver, WA

at [Salmon Creek Ridge](#)

Lot #66 | The Evergreen

\$965,000

4 BR | 3 BA | 2,802 SF

**AVAILABLE OCT 2025****4117 N 14th Way**

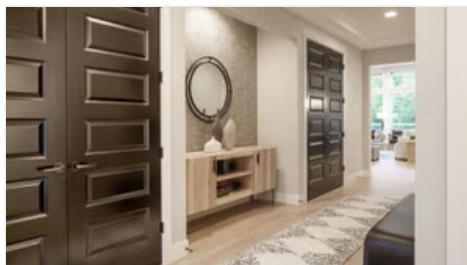
Ridgefield, WA

at [Paradise Pointe](#)

Lot #208 | The Willow

\$885,000

3 BR | 2.5 BA | 2,893 SF

**UNDER CONSTRUCTION****4145 SW Bigler Way**

Port Orchard, WA

at [McCormick Trails](#)

Lot #262 | The Holly

\$824,900

3 BR | 2.5 BA | 2,119 SF

**AVAILABLE NOV 2025****4200 N 15th Way**

Ridgefield, WA

at [Paradise Pointe](#)

Lot #221 | The Laurelwood Multi-Gen

\$893,000

3 BR | 3 BA | 2,258 SF

Quick Move-in Homes

**AVAILABLE NOW****4211 N 11th Way**

Ridgefield, WA

at [Paradise Pointe](#)

Lot #91 | The Aspen

\$949,000

4 BR | 3.5 BA | 3,097 SF

**AVAILABLE OCT 2025****4701 NW Camas Meadows Dr**

Camas, WA

at [The Nines at Camas Meadows Townhomes](#)

Lot #3 | The Astoria

\$716,000

3 BR | 2.5 BA | 1,854 SF

**AVAILABLE OCT 2025****4703 NW Camas Meadows Dr**

Camas, WA

at [The Nines at Camas Meadows Townhomes](#)

Lot #2 | The Bandon

\$676,000

4 BR | 2.5 BA | 1,976 SF

**AVAILABLE OCT 2025****4705 NW Camas Meadows Dr**

Camas, WA

at [The Nines at Camas Meadows Townhomes](#)

Lot #1 | The Camaloch

\$747,000

3 BR | 2.5 BA | 2,117 SF

**AVAILABLE OCT 2025****4751 NW Camas Meadows Dr**

Camas, WA

at [The Nines at Camas Meadows Townhomes](#)

Lot #69 | The Dogwood

\$819,000

4 BR | 3.5 BA | 2,360 SF

**AVAILABLE OCT 2025****4753 NW Camas Meadows Dr**

Camas, WA

at [The Nines at Camas Meadows Townhomes](#)

Lot #70 | The Dogwood

\$808,000

4 BR | 3.5 BA | 2,360 SF

Quick Move-in Homes

**AVAILABLE NOV 2025****4761 NW 71st Ave**

Camas, WA

at [The Nines at Camas Meadows](#)

Lot #45 | The Alpine

\$1,589,000

5 BR | 4.5 BA | 3,650 SF

**AVAILABLE NOW****4764 NW 71st Ave**

Camas, WA

at [The Nines at Camas Meadows](#)

Lot #51 | The Nisqually

\$924,000

3 BR | 2.5 BA | 2,272 SF



Community Giving

**AVAILABLE NOW****4776 NW 71st Ave**

Camas, WA

at [The Nines at Camas Meadows](#)

Lot #50 | The Rogue

\$958,000

4 BR | 3 BA | 2,527 SF

**UNDER CONSTRUCTION****5461 Thornhill Ave SW**

Port Orchard, WA

at [McCormick Trails](#)

Lot #338 | The Molalla

\$824,900

3 BR | 2 BA | 2,005 SF

**UNDER CONSTRUCTION****5481 Thornhill Ave SW**

Port Orchard, WA

at [McCormick Trails](#)

Lot #337 | The Holly

\$774,900

3 BR | 2 BA | 2,109 SF

**AVAILABLE NOW****629 SW 49th Drive**

Gresham, OR

at [The Landing at Regner](#)

Lot #4 | The Pinehurst

\$749,000

3 BR | 2.5 BA | 1,991 SF

Quick Move-in Homes

**AVAILABLE NOW****6361 Great Glen Rd SW**

Port Orchard, WA

at [McCormick Trails](#)

Lot #257 | The Molalla

\$839,900

2 BR | 2.5 BA | 2,005 SF

**UNDER CONSTRUCTION****6669 N Wonder Ave**

Meridian, ID

at [Inspirado](#)

Lot #10/3 | The Deschutes

\$674,900

3 BR | 2 BA | 1,814 SF

**UNDER CONSTRUCTION****6684 N Wonder Ave**

Meridian, ID

at [Inspirado](#)

Lot #26/2 | The Molalla Bonus

\$799,900

3 BR | 3.5 BA | 2,562 SF

**UNDER CONSTRUCTION****6699 N Wonder Ave**

Meridian, ID

at [Inspirado](#)

Lot #12/3 | The Bridger

\$799,900

5 BR | 4 BA | 3,181 SF

**AVAILABLE OCT 2025****6732 N Magic Mallard Ave**

Meridian, ID

at [Inspirado](#)

Lot #4/3 | The Molalla Bonus

\$739,900

3 BR | 3.5 BA | 2,562 SF

**UNDER CONSTRUCTION****6743 N Wonder Ave**

Meridian, ID

at [Inspirado](#)

Lot #14/3 | The Molalla

\$687,900

3 BR | 2 BA | 2,005 SF

Quick Move-in Homes



Self Tour Available
AVAILABLE NOW

6827 N Brock River Pl
Meridian, ID
at [StarPointe](#)

Lot #5/4 | The Jefferson

\$874,900

4 BR | 2.5 BA | 2,500 SF



AVAILABLE OCT 2025

6829 N Valley Breeze Ave
Meridian, ID
at [StarPointe](#)

Lot #1/3 | The Aspen

\$919,900

4 BR | 3 BA | 3,122 SF



UNDER CONSTRUCTION

7566 W Old School St
Meridian, ID
at [Inspirado](#)

Lot #19/2 | The Rogue

\$784,900

4 BR | 3.5 BA | 2,527 SF



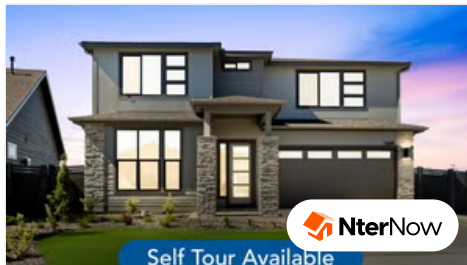
UNDER CONSTRUCTION

7602 W Old School St
Meridian, ID
at [Inspirado](#)

Lot #17/2 | The Fernwood

\$799,900

5 BR | 2.5 BA | 3,226 SF



Self Tour Available
AVAILABLE NOW

7649 W Whisper Ridge Dr
Meridian, ID
at [Inspirado](#)

Lot #9/4 | The Rogue

\$749,900

5 BR | 3.5 BA | 2,782 SF



AVAILABLE OCT 2025

7660 W Old School St
Meridian, ID
at [Inspirado](#)

Lot #3/2 | The Rogue

\$779,900

4 BR | 2.5 BA | 2,527 SF

Quick Move-in Homes

**UNDER CONSTRUCTION****7714 W Flathead Lake St**
Eagle, IDat [The Estates at Eagle Ridge](#)

Lot #12/10 | The Aspen

\$999,900

4 BR | 3.5 BA | 3,122 SF

**AVAILABLE OCT 2025****7738 W Flathead Lake St**
Eagle, IDat [The Estates at Eagle Ridge](#)

Lot #11/10 | The Alpine

\$1,099,900

5 BR | 4 BA | 3,650 SF

**AVAILABLE OCT 2025****7760 W Flathead Lake St**
Eagle, IDat [The Estates at Eagle Ridge](#)

Lot #10/10 | The Jefferson

\$999,900

3 BR | 2.5 BA | 2,500 SF

**AVAILABLE NOW****7779 W Daybreak Run Ct**
Meridian, IDat [Inspirado](#)

Lot #10/1 | The Nisqually

\$649,900

4 BR | 2.5 BA | 2,272 SF

**AVAILABLE OCT 2025****7952 N Hargrave St**
Camas, WAat [The Landing at Green Mountain](#)

Lot #18 | The Madison

\$939,000

5 BR | 3.5 BA | 3,182 SF

**AVAILABLE SEP 2025****804 NW 175th St**
Ridgefield, WAat [North Haven](#)

Lot #265 | The Powell

\$549,000

3 BR | 2.5 BA | 1,775 SF

Quick Move-in Homes

**AVAILABLE NOW****8156 N Hargrave St**
Camas, WAat [The Landing at Green Mountain](#)

Lot #12 | The Rogue

\$875,000

4 BR | 3 BA | 2,527 SF

**AVAILABLE NOW****8189 N Hargrave St**
Camas, WAat [The Landing at Green Mountain](#)

Lot #27 | The Wenatchee

\$778,000

3 BR | 2.5 BA | 2,083 SF

**AVAILABLE OCT 2025****8304 N Hargrave St**
Camas, WAat [The Landing at Green Mountain](#)

Lot #5 | The Molalla

\$855,000

3 BR | 2 BA | 2,005 SF

**COMING SOON****8482 W Graye St**
Meridian, IDat [StarPointe](#)

Lot #14/2 | The Alpine

\$1,039,900

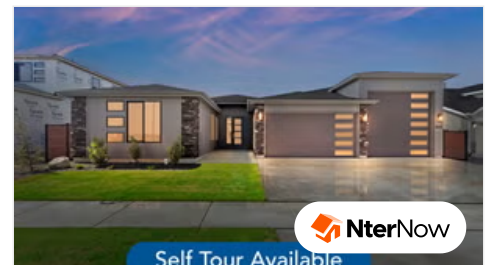
6 BR | 4 BA | 3,650 SF

**COMING SOON****8603 W Happy Day Dr**
Meridian, IDat [StarPointe](#)

Lot #27/1

\$1,049,900

4 BR | 3.5 BA |



Self Tour Available

AVAILABLE NOW**8691 W Inspirado St**
Meridian, IDat [StarPointe](#)

Lot #12/3 | The Jefferson

\$849,900

4 BR | 2.5 BA | 2,500 SF

Quick Move-in Homes



AVAILABLE NOW

8709 W Inspirado St

Meridian, ID

at [StarPointe](#)

Lot #13/3 | The Holly

\$699,899

3 BR | 2.5 BA | 2,098 SF