

Contact Us

Phone: (877) 500-5675
Email: info@buildplh.com

8530 W Graye St

Meridian, ID 83646

Priced At

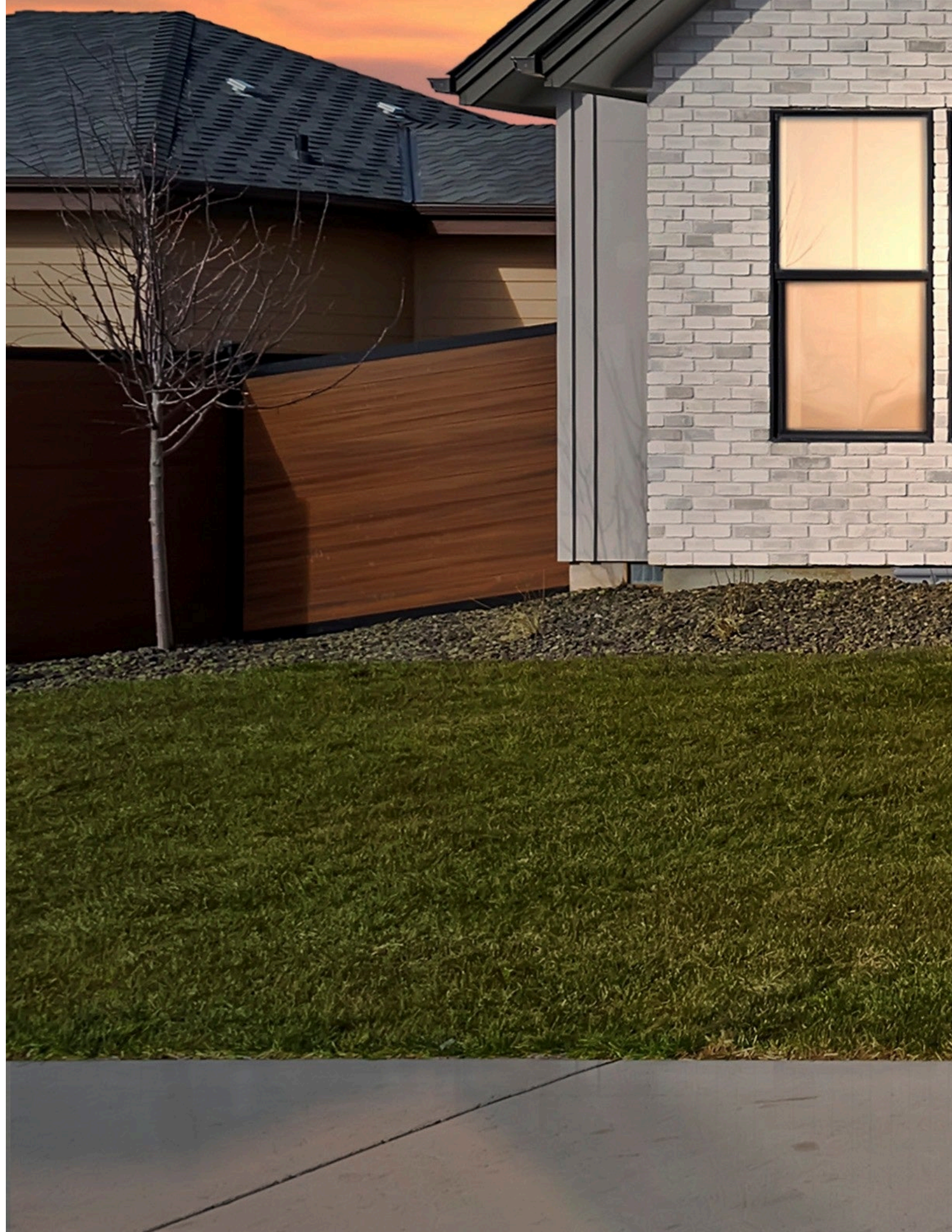
\$1,069,900

StarPointe

The Shasta XXL Floor Plan

- 3904
Square Feet
- 4
Bedrooms
- 3.5
Bathrooms
- 3
Car Garage







The Shasta XXL offers homeowners plenty of great options with three to five bedrooms, 3.5 to 4 bathrooms, a three-car garage, and 3756 square feet of living space. There are also multiple elevations, all of which complement the aesthetics of the Pacific Northwest. This is an excellent choice for those who want even more flexibility, options and space.

From the well-lit entry with transom and side windows surrounding the front door, an elegant coffered ceiling hallway leads you into the home. Along the hallway, you'll find an arched entrance to the dining room on one side and the standard den on the other side. For those preferring additional bedrooms, it is possible to convert the den into a bedroom.

As you continue down the hallway, you'll find another arched entrance that leads into a smaller hallway that includes access to the powder room on one end, and access to the primary bedroom suite on the other. Arched entrances lead to both spaces adding to the beauty of the home's interior. There is also the option to turn the powder room into a full bathroom when the den is used as an additional bedroom. The primary bedroom is like a spacious retreat with a large bedroom, an en suite bathroom that includes a soaking tub, separate shower options, large dual-sink vanity, linen closet, and separate water closet. The bathroom is roomy enough for two people to get ready together easily, and also includes access to the substantial walk-in closet.

Storage is important in any home and the Shasta XXL provides plenty, with linen closets throughout the home, large walk-in closets, and even a dedicated storage closet at the end of the entry hallway.

The entry hallway also leads you directly into the great room, which lives up to its name with extensive windows for great natural light. Because the great room has a 12-foot ceiling, there are also transom windows built in for even more light. The room is finished off with a coffered ceiling for a stunning visual impact.

Next to the great room is the kitchen, with plenty of cabinet and counter space, as well as an eat-in island that includes a double sink. The kitchen area also has a nook that is perfect for more casual dining or as a play area for children or an extension of the great room.

A horizontal hallway runs much of the width of the home, passing the great room, kitchen, which has an arched entrance onto the hallway, the walk-in pantry, a door to the garage, a large laundry room, another linen closet, two bedrooms, and the other full bathroom. In addition, there's a butler's pantry with arched entrances that leads into the dining room. This serves as an excellent staging area for hosting dinners or it can be used as a wet bar with the inclusion of an optional sink and cabinet. Off this hallway is also the stairs to the upper floor.

Upstairs, you'll find a space that can serve a variety of purposes. Although it is not a complete second story, it is an incredibly spacious area with a media room, bonus room, fourth bedroom, and full bathroom. There are additional closets for added storage, and an optional built-in desk in one corner also comes in handy. Once again, it's really up to the home buyer how they use these extra space. It certainly works for family entertainment, but could also serve as a more autonomous living space for multi-generational living arrangements.

The Shasta XXL has a great flow to the home's layout, upstairs and down, offering both privacy for the bedrooms and a real feeling of openness in the central living area. As with all Pacific Lifestyle Home designs, there are a variety of options available that add convenience, space, and style to the home. Among some of the options available for the Shasta XXL home design are:

- Tray Ceiling in Dining Room and Primary Bedroom
- Gas Fireplace with Surrounding Built-ins in Great Room
- Skylight in Second Bathroom and Upstairs Bonus Room
- Additional Windows Throughout the Home
- French Doors and Closet in Den/Fifth Bedroom
- Sink and Cabinet in Laundry Room

The Shasta XXL is a beautiful home with a great layout to fit a variety of lifestyles, providing the kind of space that lets you embrace your passions. Contact Pacific Lifestyle Homes today to learn more about the Shasta XXL home designs and find the one that is your perfect fit.

Square footage is approximate and subject to change. Completion dates are subject to change. Pre-Sale pricing is the base price. Permit Ready pricing includes structural options. Quick Move-In pricing includes structural and personal choice options. Pricing is subject to change. Pacific Lifestyle Homes, Broker. WA LIC# PACIFLH924RI; OR CCB# 173524.

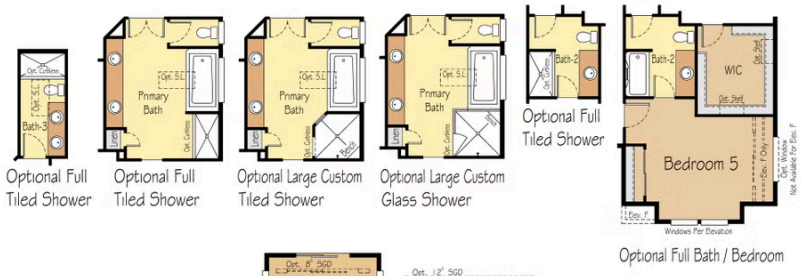
Contact Us
 Phone: (877) 500-5675
 Email: info@buildplh.com

8530 W Graye St

Meridian, ID 83646

The Shasta XXL Floor Plan

3904 Shasta-XXL



Square footage is approximate and subject to change. Completion dates are subject to change. Pre-Sale pricing is the base price. Permit Ready pricing includes structural options. Quick Move-In pricing includes structural and personal choice options. Pricing is subject to change. Pacific Lifestyle Homes, Broker. WA LIC# PACIFLH924RI; OR CCB# 173524.