

Contact Us

Phone: (877) 500-5675
Email: info@buildplh.com

901 W Malbar St

Meridian, ID 83646

Priced At

\$724,900

Sagarra at Orchard Park

The Wenatchee RV Garage Floor Plan

- 2370
Square Feet
- 4
Bedrooms
- 3.5
Bathrooms
- 2
Car/RV Garage





9
0
1

The Wenatchee with RV garage home plan offers exceptional flexibility and comfort with 2,370 square feet, 4 bedrooms, and 3.5 bathrooms, thoughtfully designed to accommodate a variety of lifestyles. This version enhances the original layout with a 2-car garage paired with a dedicated RV bay, as well as a second primary suite on the main floor, making it an ideal option for multi-generational living or long-term guests.

Upon entering the home, you're greeted by a welcoming foyer with room for everyday essentials and an adjacent powder room for convenience. The entry hall leads into the spacious great room, which flows seamlessly to the covered back patio, creating an effortless indoor-outdoor living experience. The adjoining kitchen and dining area form the heart of the home, offering an inviting space for gathering and entertaining. The kitchen includes a walk-in pantry, generous cabinet storage, and a central island, with direct access to the garage—perfect for unloading groceries.

One of the standout features of this modified plan is the main-floor second primary suite, complete with its own full bathroom. This private retreat adds invaluable flexibility, whether used for guests, extended family, or a private home office setup.

Upstairs, you'll find three additional bedrooms, including the spacious primary suite, which features a dual-sink vanity and a large walk-in closet. Two secondary bedrooms share a well-appointed bathroom. A generous loft—which in this modified plan remains an open loft rather than a potential extra bedroom—provides adaptable space for a media room, play area, home gym, or lounge. The upper level also includes a thoughtfully designed laundry room with linen storage for everyday convenience.

The enhanced garage layout offers even more versatility. The 2-car garage plus RV bay provides abundant room for vehicles, outdoor gear, or workshop needs, making it an ideal fit for hobbyists, adventurers, or homeowners needing additional storage.

With thoughtful updates that prioritize convenience, multi-generational living, and modern flexibility, this modified Wenatchee plan expands on an already popular design. It brings together spacious living areas, purposeful room layouts, and smart storage solutions—all crafted to support the way you live today. If you're seeking a home that adapts easily to your evolving needs, the Wenatchee remains one of the most versatile and accommodating plans available.

Square footage is approximate and subject to change. Completion dates are subject to change. Pre-Sale pricing is the base price. Permit Ready pricing includes structural options. Quick Move-In pricing includes structural and personal choice options. Pricing is subject to change. Pacific Lifestyle Homes, Broker. WA LIC# PACIFLH924RI; OR CCB# 173524.

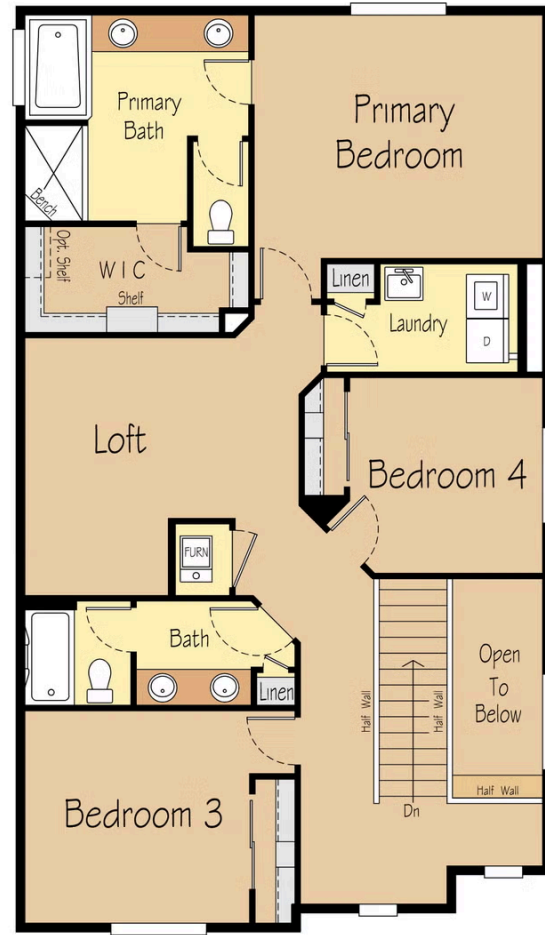


Contact Us

Phone: (877) 500-5675
Email: info@buildplh.com

901 W Malbar St

Meridian, ID 83646



Square footage is approximate and subject to change. Completion dates are subject to change. Pre-Sale pricing is the base price. Permit Ready pricing includes structural options. Quick Move-In pricing includes structural and personal choice options. Pricing is subject to change. Pacific Lifestyle Homes, Broker. WA LIC# PACIFLH924RI; OR CCB# 173524.