

Contact Us

Phone: (877) 500-5675  
Email: [info@buildplh.com](mailto:info@buildplh.com)

## 923 W Malbar St.

Meridian, ID 83646

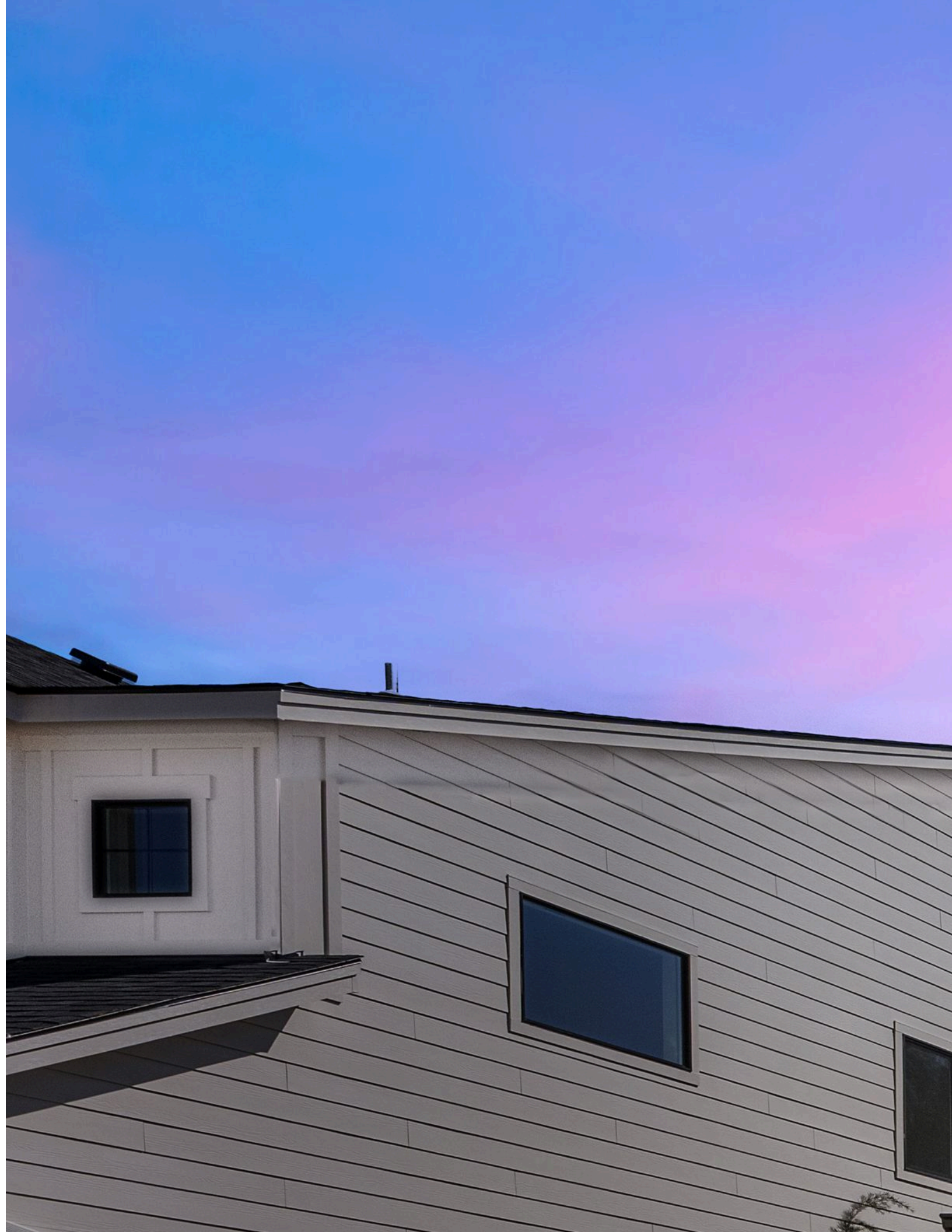
### Priced At

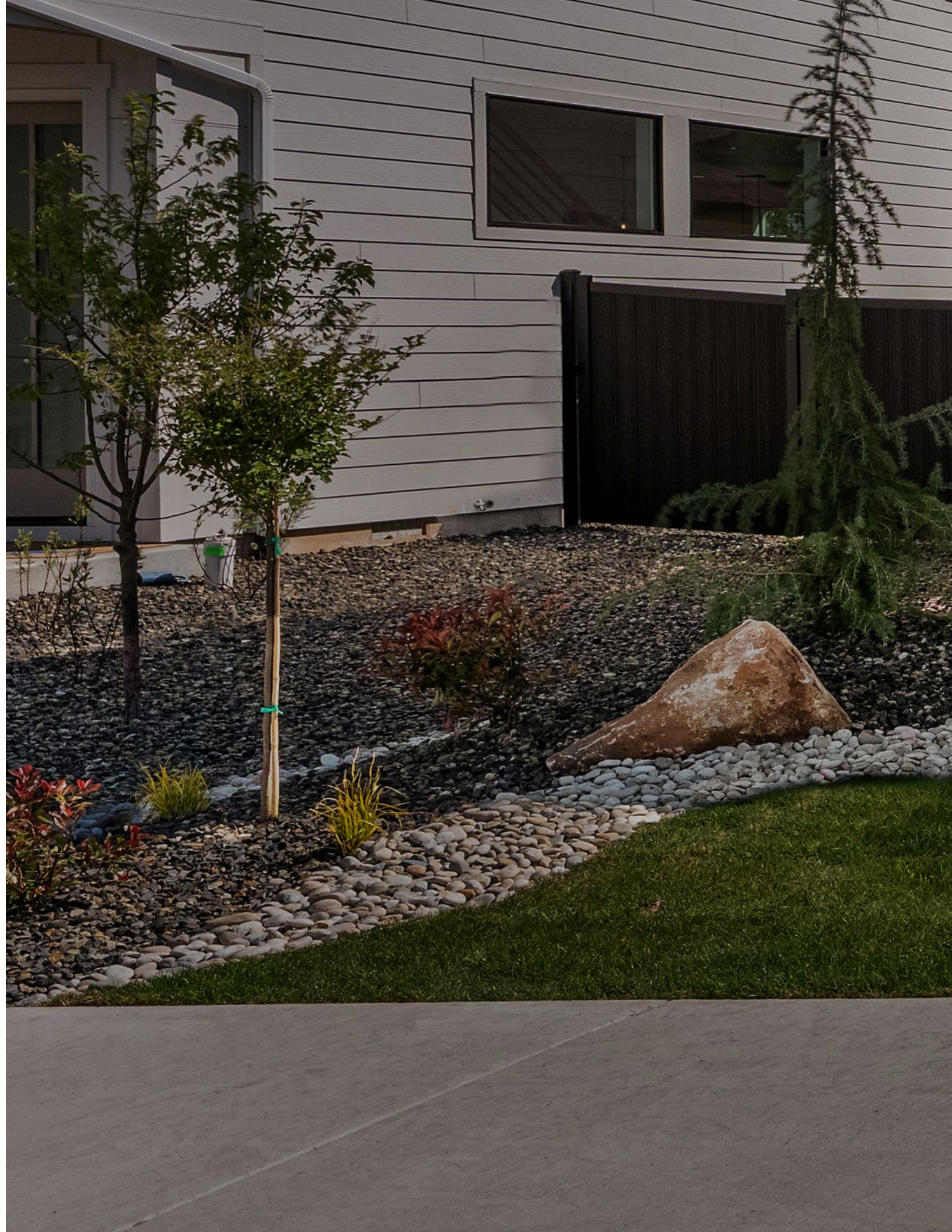
\$846,900

Sagarra at Orchard Park

The Rogue Multi-Gen Floor Plan

- 2956  
Square Feet
- 4  
Bedrooms
- 3.5  
Bathrooms
- 4  
Car Garage







The Rogue home is all about flexibility and comfort. From the four unique elevations ranging from traditional to contemporary to the 2527 square feet of living space, this home serves up a variety of options to fit just about any Pacific Northwest lifestyle.

With 3 to 5 bedrooms and 2.5 to 3 bathrooms, the Rogue is designed to meet a range of needs, from large families to home businesses to dedicated hobby space. Thanks to a den, optional bonus room, and optional extended garage, plus spacious bedrooms and living areas, there's convenience built into every part of the home.

From the moment you step onto the welcoming covered front porch, you'll feel right at home. The large entry foyer with a spacious coat closet and powder room also leads to the den with an optional coffered ceiling. Optional doors and windows in this space provide the natural light and the privacy many people want in a home office or quiet area.

A hallway leading from the entry foyer takes you into the heart of the home with a spacious great room that looks out over the covered patio or deck. Next to the great room is the beautiful kitchen with plenty of storage in cabinets, a walk-in pantry, and an island ideal for everything from a casual meal to a buffet area for entertaining. The kitchen then leads into the dining area, which has access to the patio, perfect for indoor/outdoor fun and festivities.

Upstairs, you'll find the bedrooms, as well as the centrally located large laundry room. The primary suite includes a gigantic walk-in closet and spa-like bathroom. This level also features two additional bedrooms, as well as a full bathroom. This second story of the home provides numerous design choices, including an open area looking out over the great room for those who love wide-open spaces. Other options include a large bonus room or additional bedroom/bathroom combinations.

With the Rogue, you have a plethora of choices to help you customize and personalize the home to meet your dreams. Among the many options are:

- Tray Ceiling in the Primary Bedroom
- Additional Windows in the Primary Bedroom
- A Sink in the Large Laundry Room
- Gas Fireplace in the Great Room
- Built-Ins Adjacent to the Fireplace
- Double Ovens in the Kitchen
- Fourth Garage Space, Ideal for Everything from Boats and Bikes to Woodworking

When you choose the Rogue, from Pacific Lifestyle Homes, you also make the choice to work with a company that cares deeply about the quality of the homes we build and the happiness of our customers.

Square footage is approximate and subject to change. Completion dates are subject to change. Pre-Sale pricing is the base price. Permit Ready pricing includes structural options. Quick Move-In pricing includes structural and personal choice options. Pricing is subject to change. Pacific Lifestyle Homes, Broker. WA LIC# PACIFLH924RI; OR CCB# 173524.



Contact Us

Phone: (877) 500-5675  
Email: [info@buildplh.com](mailto:info@buildplh.com)

# 923 W Malbar St.

Meridian, ID 83646

The Rogue Multi-Gen Floor Plan



Square footage is approximate and subject to change. Completion dates are subject to change. Pre-Sale pricing is the base price. Permit Ready pricing includes structural options. Quick Move-In pricing includes structural and personal choice options. Pricing is subject to change. Pacific Lifestyle Homes, Broker. WA LIC# PACIFLH924RI; OR CCB# 173524.